

TB325R

Standard UK Specification - Rubber Track, Long Arm

Engine	
Make	Yanmar
Model	3TNV82A
Rated Output (kW)/rpm	16.5 / 2200
Maximum Torque (Nm)	85.1
Cylinders	3
Displacement (cc)	1330
Electrical System	12V / 58A
Dimensions & Weight	
Operating Weight inclusive of bucket, hitch and fuel (kg) Cab/Canopy	2440 / 2310
Overall Length (mm)	4020
Overall Length dozer at rear (mm)	4435
Width cab/canopy (mm)	1500
Height cab/canopy (mm)	2490 / 2420
Ground Clearance (mm)	275
Min. Front Swing Radius (mm)	1625
Tail Swing Radius (mm)	825
Dozer Blade (W x H) (mm)	1500 x 300
Operating Information	
Max Digging Depth (mm)	2540
Max Dump Height (mm)	2775
Max Reach at Ground Level (mm)	4350
Max Vertical Digging Depth (mm)	2045
Max Bucket Digging Force (kN)	19.3
Max Arm Digging Force (kN)	11.3
Hydraulic System	
Main System Pressure (bar)	210
Pump Type	Variable x 2 + Gear x 2
1st Auxiliary Maximum Flow (l/min) / Pressure (bar)	40 / 210
*2nd Auxiliary Maximum Flow (l/min) / Pressure (bar)	14.7 / 196
Swing System	
Boom Swing Angle (R/L)	55 / 70
Slew Speed (rpm)	8.9
Slew Motor	Axial Piston
Slew Brake	Wet Friction Plate
Undercarriage	
Traction Motor	Axial Piston
Traction Drive	Planetary
Traction Brake	Disc
Track Width (mm)	250
Ground Contact Length (mm)	1510
Ground Pressure (kpa)	29.1 / 27.6
Travel Speed (km/h)	2.5 / 4.3
Maximum Gradeability	25
Capacities	
Hydraulic System (l)	48
Fuel Tank (l)	31.2
Engine Lubrication (l)	3.6
Cooling System (l)	4.7

All dimensions unless otherwise stated are in millimeters.

OPTIONS: Hydraulic breaker, hitches, buckets.

TFM Fleet Management *Factory fitted option - 2nd Auxiliary and change over valve.

**2 YEAR
2,000 HOUR**

WARRANTY*

Takeuchi machines come with a 2 year/2000 hours warranty as standard. Warranty exceptions to 1 year: fuel injection systems, electrical components, paint work and *emission control items. (*applicable models).

Before fitment of a hydraulic attachment, machine auxiliary pressure and flow should be accurately measured.

In accordance with our established policy of constant improvement, we reserve the right to amend these specifications at any time without notice. Photographs shown may feature non-standard equipment.

06/2021

For more information locally contact:

Takeuchi Mfg (UK) Ltd, Unit E2B Kingsway Business Park,
John Boyd Dunlop Drive, Rochdale, Lancashire OL16 4NG
Tel: 01706 657 722 Email: info@takeuchi-mfg.co.uk
www.takeuchi-mfg.co.uk

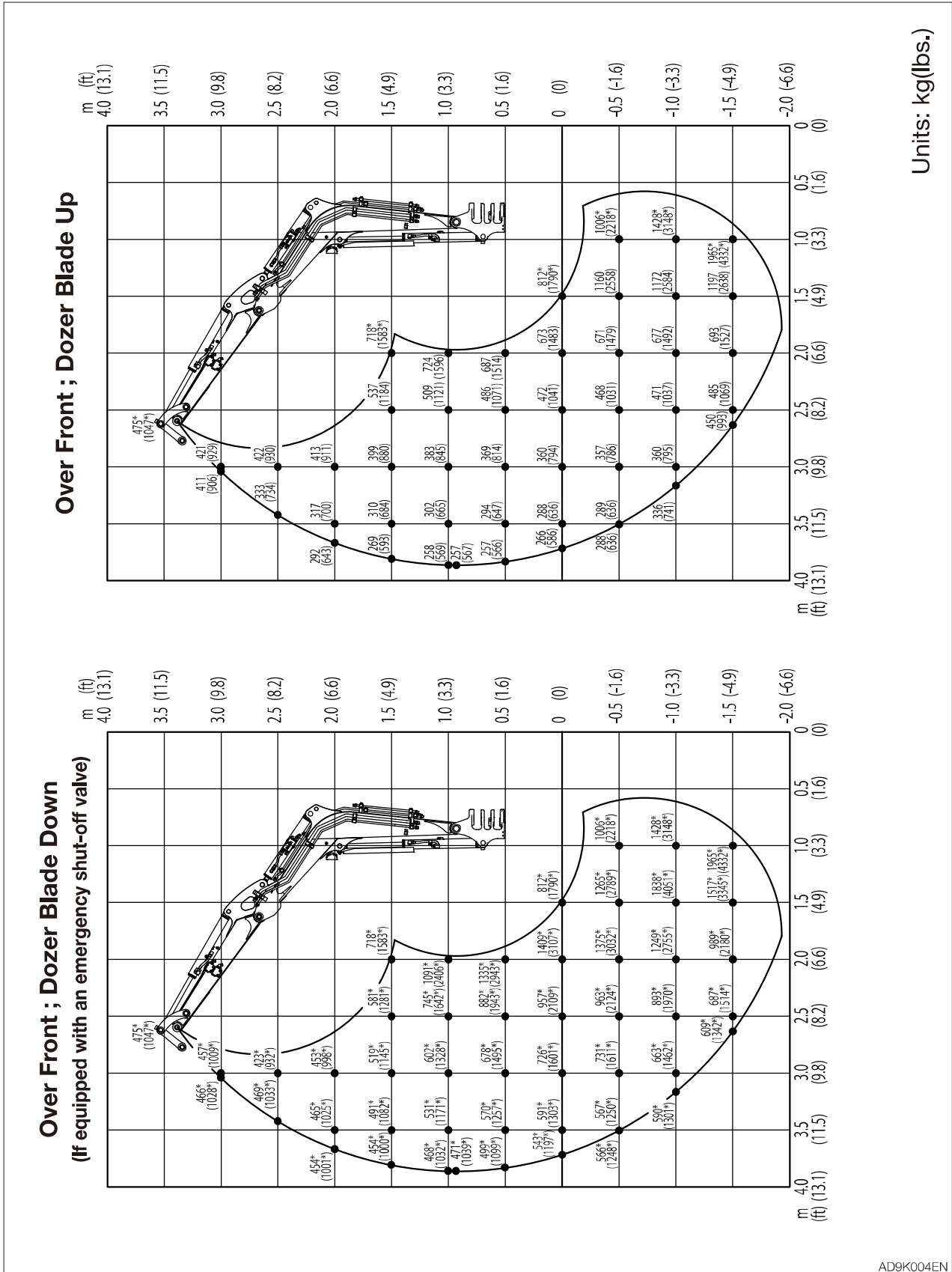


TAKEUCHI
From World First to World Leader



SPECIFICATIONS
LIFTING CAPACITIES

Long arm <Cab>





SPECIFICATIONS
LIFTING CAPACITIES

Long arm <Cab>

